

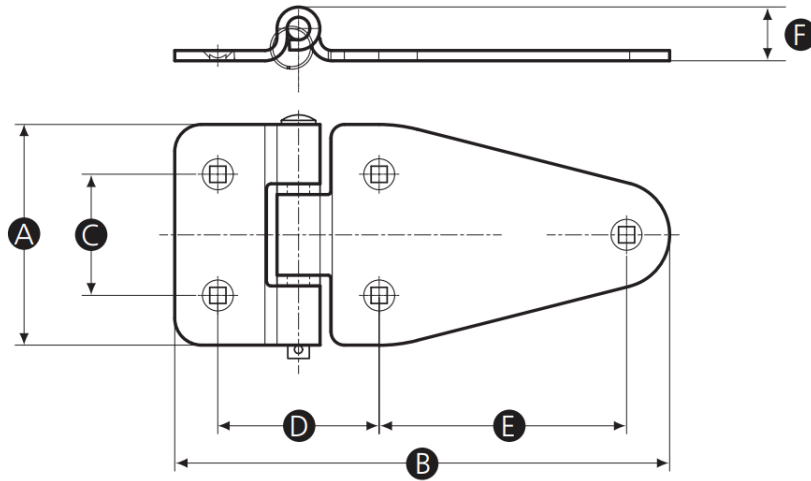
G05HI Quick Release Polished Metal Hinge

Features

- Quick release pin allows lateral separation of hinge leaves
- Stainless steel heavy duty hinge

Material

- Body: Stainless steel 304, electrolytic polish
- Pin: Stainless steel 304 and nylon washers



Part No.	A	B	C	D	E	F	Square Bore
G05HI-15432X	82	184	45	60	92	20	6

Part No.	Radial Load	Axial Load	Recommended Tightening Torque	Approx. Shear Force Per Screw
G05HI-15432X	400 N	750 N	2.5 N.m	0.5 kN